

The University of Montana – Helena

COLLEGE OF TECHNOLOGY

College Council

3:30 -5:00 p.m.

Lecture Hall

March 27, 2012

Present: Daniel Bingham, Russ Fillner, ~~Jean Bailey, Sarah Dellwe~~, Mike Brown, Gary Frankforter, Jeff Block, Steve Lewis, Nathan Munn, Suzanne Hunger, Monica Ramirez, John Hartman, ~~Carey Grubb~~, Recorder: Gigi Bottenfield

Phone Numbers

The Information Technology Department is implementing new phone numbers with a new phone system on both campuses. The main campus will have 69.. and the the Airport campus will have 63.. phone numbers. The new phone numbers will be posted in various locations.

ALI-ALFI Surveys

The student surveys closed last week and the adult surveys will close this Friday. UMH will review after all the reports are in.

Strategic Plan

The overall Strategic Plan is in it's final stages. The completed draft will be discussed during the next College Council meeting.

UMH Planning Assessment Cycle

The Committee reviewed and approved the assessment cycle diagram as presented (see attached). The diagram displays our yearly assessment process while incorporating budgeting and program planning.

Northwest Commission on Colleges and Universities Year Three Self Evaluation

Mike Brown attended the NWCCU conference, returning with a variety of handouts and dispersed them. He explained the new assessment process and the reporting involved in the three year self evaluation.



The University of Montana – Helena

COLLEGE OF TECHNOLOGY

Retention

The data from the Montana University System indicates that UMH is doing an excellent job in retaining full time students from semester to semester. From Fall of 2006 through Fall of 2010 our percentage has increased 13.7%. We continue to lead two year education in retention and growth.

Comparative Retention, Transfer & Graduation Rates

UMH continues to have good retention and graduation rates as indicated on data (see attached data chart).

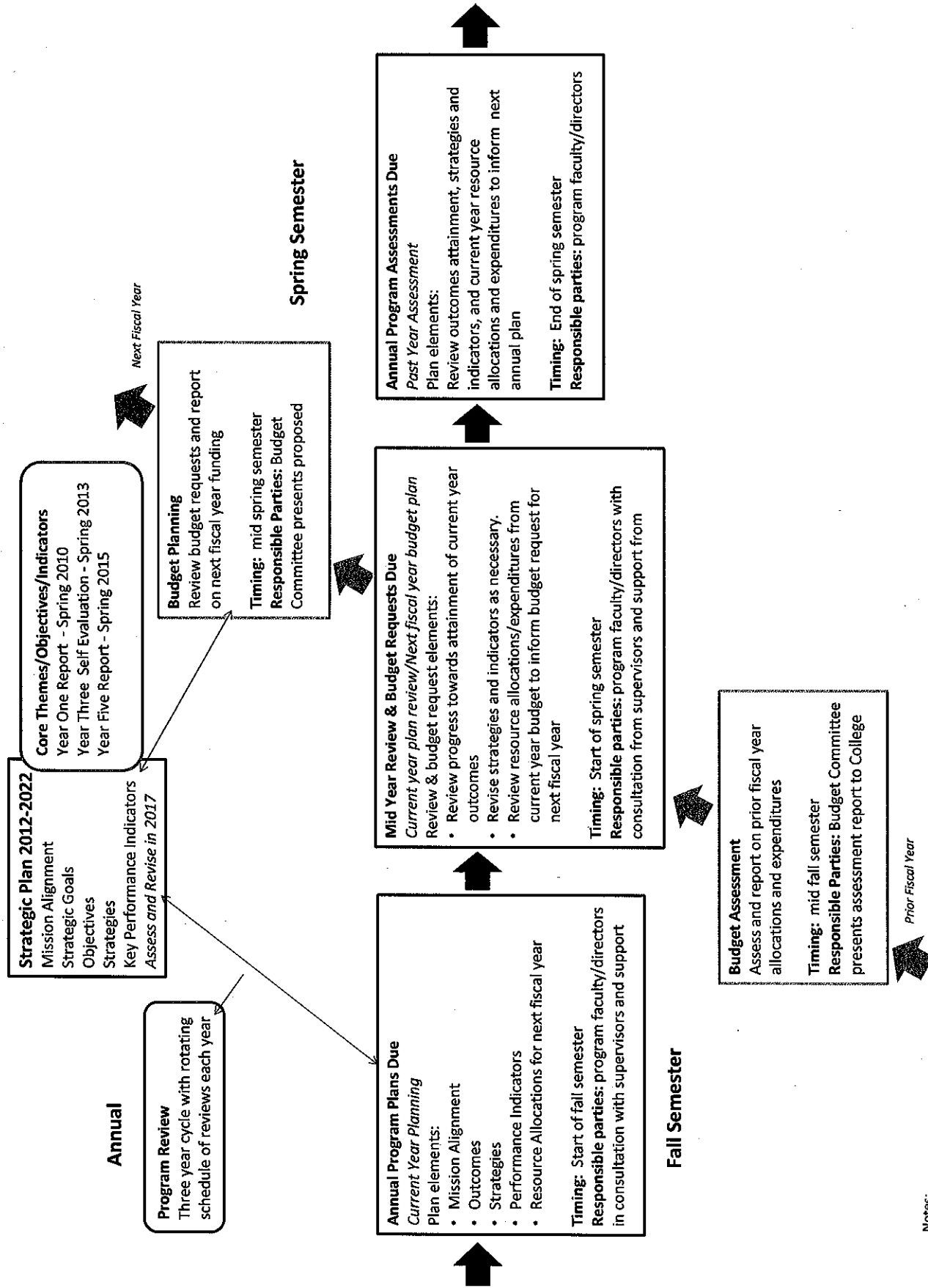
Changing our Name and expanding our Mission

The College Council committee is continuing to gather additional information and costs associated with changing our name.

- **Action Item: Areas were given until April 20th to have ideas and budgets submitted to Dean Bingham for the April 27th deadline.**

Meeting Dismissed at 4:40

UMH Planning Assessment Cycle



Notes:
Thin arrows demonstrate alignment with institutional mission/strategic goals/core themes, while bold arrows demonstrate an integrated cycle of continuous improvement
Timing on planning/assessment activities notes due dates with intent to provide programs flexibility to prepare required reporting as appropriate to particular schedules and activities

Comparative Retention, Transfer & Graduation Rates – UM-Helena College of Technology

Retention Rates As Measured by Fall to Fall Semester Persistence

	2006-2007 1 st to 2 nd Year Retention	2007-2008 1 st to 2 nd Year Retention	2008-2009 1 st to 2 nd Year Retention	2009-2010 1 st to 2 nd Year Retention	2010-2011 1 st to 2 nd Year Retention
UM-Helena (IPEDS)	47% FT 46% PT	58% FT 40% PT	56% FT 44% PT	59% FT 36% PT	61% FT
UM-Helena (Inst. Data)	54%	54%	54%	53%	61% <i>Goal=60%</i> <i>Threshold=55%</i>
MUS 2 Yr * (IPEDS)	50% FT 48% PT (n=8)	56% FT 36% PT (n=8)	58% FT 42% PT (n=8)	54% FT 42% PT (n=8)	53% FT (n=8)
WICHE States	56%	58%	60%		
ACT Annual Survey 2 Yr Public	51% (n=405)	54% (n=824)	54% (n=824)	56% (n=806)	55% (n=792)
NCES (All Title IV 2 yr Public)			60%		

*IPEDS data includes Dawson CC, Flathead Valley CC, Miles CC, Montana Tech COT, MSU-Billings COT, MSU-Great Falls COT, UM-COT, UM-Helena COT

** Institutional vs. IPEDS data differs by # students included in cohort. IPEDS data reflects only first-time students disaggregated by enrollment status which represents about a 1/3 of the entering cohort each fall. Institutional data reflects the entire cohort of entering students each fall including transfers and readmits.

Comparative Retention, Transfer & Graduation Rates – UM-Helena College of Technology

Graduation Rates

	150% Graduation Rate 2004 Cohort	150% Graduation Rate 2005 Cohort	150% Graduation Rate 2006 Cohort	150% Graduation Rate 2007 Cohort	150% Graduation Rate 2008 Cohort
UM-Helena (IPEDS)	40%	36%	26%	32%	32% (Unofficial)
UM-Helena** (Inst. Data)			37%	28%	26% Goal=30% Threshold=25%
MUS 2 Year* (IPEDS)	27% (n=6)	26% (n=6)	23% (n=6)	36% (n=6)	Pending Spring 12
WICHE States	24%	25%	24%	23%	22%
ACT Annual Survey 2 Year Public	27% (n=253)	29% (n=442)	28% (n=439)	28% (n=453)	27% (n=447)
NCES (All Title IV 2 Year Public)	22%	21%			

*IPEDS data includes Dawson CC, Flathead Valley CC, Miles CC, Montana Tech COT, MSU-Billings COT, MSU-Great Falls COT

** Institutional vs. IPEDS data differs by # students included in cohort. IPEDS data reflects only first-time, full-time students representing about a 1/3 of the entering cohort each fall. Institutional data reflects the entire cohort of entering students each fall including transfers and readmits.

Comparative Retention, Transfer & Graduation Rates – UM-Helena College of Technology

Transfer Rates

	150% Transfer Rate 2004 Cohort	150% Transfer Rate 2005 Cohort	150% Transfer Rate 2006 Cohort	150% Transfer Rate 2007 Cohort	150% Transfer Rate 2008 Cohort
UM-Helena** (IPEDS)	0%	12%	16%	17%	<i>Pending Spring 12 Goal=20% Threshold=15%</i>
UM-Helena (Inst. Data)					
MUS 2 Year * (IPEDS)	10% (n=6)	22% (n=6)	16% (n=6)	15% (n=6)	<i>Pending Spring 12</i>
WICHE States					
ACT Annual Survey 2 Year Public					
NCES (All Title IV 2 Year Public)					

*IPEDS data includes Dawson CC, Flathead Valley CC, Miles CC, Montana Tech COT,
MSU-Billings COT, MSU-Great Falls COT

**Transfer rates reported to IPEDS are not contingent upon degree-completion and are based on data
obtained from the National Student Clearinghouse